



# **TAHOE TRUCKEE**

## **UNIFIED SCHOOL DISTRICT**

**Measure U**  
**Safe and Modern Classrooms**  
**21<sup>st</sup> Century Learning**

**November 30, 2016**



## Measure U - Project Schedule

### **2016 Completed Projects:**

- Alder Creek Middle School: Parking Lot Upgrade/Security/21<sup>st</sup> Century Learning
- Glenshire Elementary School – Phase 2: Modernization/Security/21<sup>st</sup> Century Learning
- Sierra Expeditionary Learning School: Parking Lot Upgrade/Modernization/21<sup>st</sup> Century Learning
- Truckee High School: Track/Restroom Building/East West Field Upgrade
- Donner Trail Elementary School: Exterior Painting/Gym Interior Painting/Gym Flooring

### **2016/2017 Projects:**

- Maintenance/Operations Facility: New Construction
- Truckee High School: Pool Building Conversion
- Truckee High School/Warehouse: Demolition of West Wing and Warehouse Structures

### **2017 Projects:**

- Truckee High School - Phase 2: New Construction/Modernization/21<sup>st</sup> Century Learning
- Donner Trail Elementary School: New Construction/Modernization/21<sup>st</sup> Century Learning

### **2018 Projects:**

- Truckee Elementary School: New Construction/Modernization/21<sup>st</sup> Century Learning

# Alder Creek Middle School

## Scope of Work

### Construction Completed Summer of 2016

- Add parking lot egress to Alder Drive
- Exterior lighting
- Security upgrades
- Modular classroom upgrades
- Flexible furniture
- Classroom technology package

**Project Architect:** Ward Young Architects

**TTUSD Project Manager:** Will Broad

**Contractor:** Advanced Asphalt

**Site Budget:** \$1,309,500

**Parking Lot Bid:** \$883,600



# Alder Creek Middle School





# Alder Creek Middle School



# Alder Creek Middle School





# Glenshire Elementary School



## Scope of Work

### Phase I: Summer of 2015

- Relocate front entry modular buildings
- New parking lot and bus drop-off
- Exterior lighting
- Landscape front of school entry
- Town of Truckee Safe Routes to School project

### Phase II: Summer 2016

- Front entry security improvements
- Repair roofs
- Replace flooring
- Painting
- Upgrade mechanical system
- Flexible furniture
- Classroom technology package

### Phase III: TBD

- Replace modular buildings with new construction as funding becomes available

**Project Architect:** Ward Young Architects

**TTUSD Project Manager:** Jim Sajdak

**Contractor: Phase I –** McCuen Construction

**Contractor: Phase II –** Clark/Sullivan

**Phase II Construction Bid:** \$1,094,000

# Glenshire Elementary School





# Donner Trail Elementary School



## Project Schedule

- Submitted to DSA on September 29, 2016
- Bid Project March 2017
- Award Bid in April 2017
- Start Construction in June 2017
- Construction Completed by Fall 2018

**Project Architect: JK Architecture Partnership**

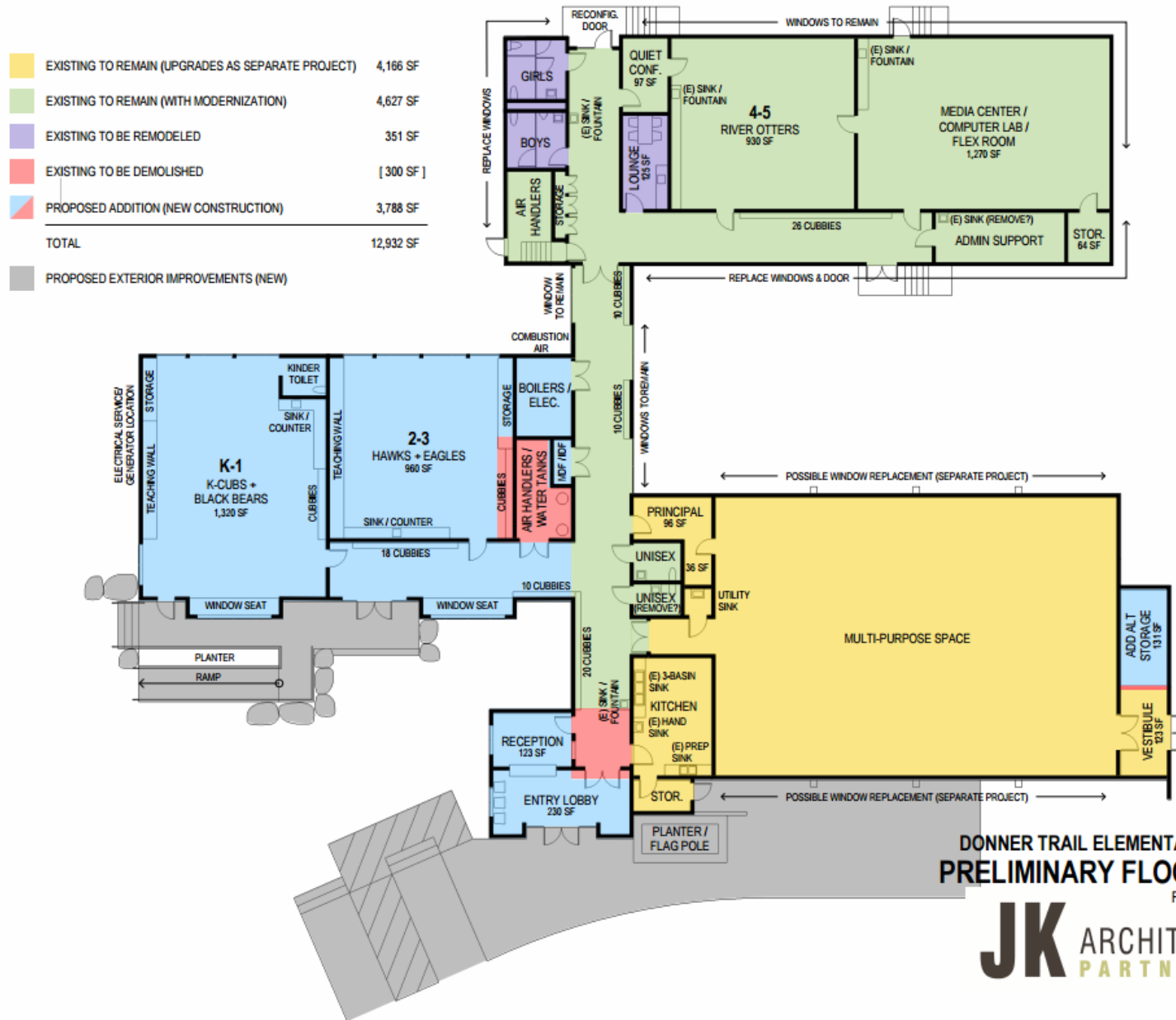
**TTUSD Project Manager: Will Broad**

**Contractor: TBD**

**Site Budget: \$4,680,050**



# Donner Trail Elementary School



**DONNER TRAIL ELEMENTARY SCHOOL**  
**PRELIMINARY FLOOR PLAN**  
 FEBRUARY 1, 2016

**JK** ARCHITECTURE  
 PARTNERSHIP

# Sierra Expeditionary Learning School

## Scope of Work

### Phase I: Summer 2015

- Paint interior and exterior
- Upgrade restrooms
- Add classroom sinks

### Phase II: Summer 2016

- New parking lot and drop-off
- Entry plaza
- Exterior lighting
- Fencing
- Add hard courts
- Flexible furniture
- Classroom technology package

**Project Architect: Ward Young Architecture**

**TTUSD Project Manager: Jim Sajdak**

**Contractor: Sierra Nevada Construction**

**Site Budget: \$1,403,000**

**Parking Lot Low Bid \$2,397,007**

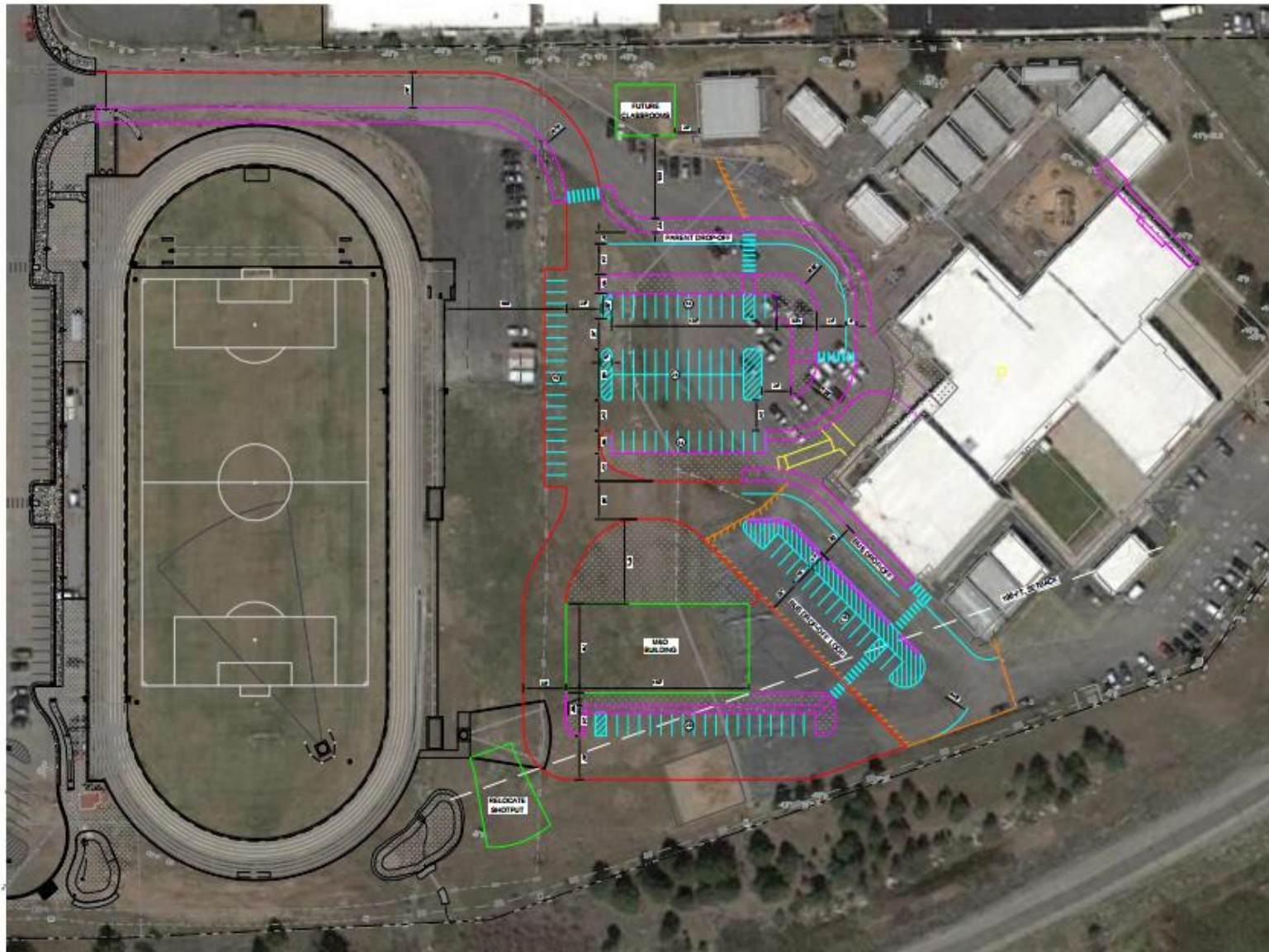
**Parking Lot Funded From**

**Warehouse/SELS/Reserves**





# Sierra Expeditionary Learning School - Maintenance/Operations

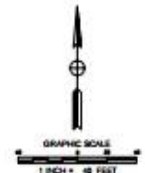


## LEGEND

- STRIPING
- EDGE OF PAVEMENT
- CURB/CONCRETE
- EXISTING EDGE OF ASPHALT
- SAWCUT LINE

- PROPOSED CONDITION
- 28'x12' PARENT DROP-OFF
  - 18'x12' BUILDING DROP-OFF

- PARKING SPACES



**ALTERNATIVE 1-D  
PARKING LOT LAYOUT**  
SELS / DISTRICT OFFICE / M&O BUILDING  
WARD-YOUNG ARCHITECTURE  
475.13 JANUARY 13, 2016

## Sierra Expeditionary Learning School - Maintenance/Operations





### Maintenance/Operations:

- Geney/Gassiot, Inc. Construction Bid: \$2,184,000
- Estimated Changes to Date: \$25,000
- Completion in March 2017





**JK ARCHITECTURE PARTNERSHIP**  
100 River Place  
Troy, Ohio, C.A. 45465  
937.278.0272

1001 River Drive  
Suite 100  
Dubuque, IA 52002  
563.284.0088

[www.jkarch.com](http://www.jkarch.com)



1994  
 1995  
 1996  
 1997  
 1998  
 1999  
 2000  
 2001  
 2002  
 2003  
 2004  
 2005  
 2006  
 2007  
 2008  
 2009  
 2010  
 2011  
 2012  
 2013  
 2014  
 2015  
 2016  
 2017  
 2018  
 2019  
 2020  
 2021  
 2022  
 2023  
 2024  
 2025  
 2026  
 2027  
 2028  
 2029  
 2030  
 2031  
 2032  
 2033  
 2034  
 2035  
 2036  
 2037  
 2038  
 2039  
 2040  
 2041  
 2042  
 2043  
 2044  
 2045  
 2046  
 2047  
 2048  
 2049  
 2050  
 2051  
 2052  
 2053  
 2054  
 2055  
 2056  
 2057  
 2058  
 2059  
 2060  
 2061  
 2062  
 2063  
 2064  
 2065  
 2066  
 2067  
 2068  
 2069  
 2070  
 2071  
 2072  
 2073  
 2074  
 2075  
 2076  
 2077  
 2078  
 2079  
 2080  
 2081  
 2082  
 2083  
 2084  
 2085  
 2086  
 2087  
 2088  
 2089  
 2090  
 2091  
 2092  
 2093  
 2094  
 2095  
 2096  
 2097  
 2098  
 2099  
 2100  
 2101  
 2102  
 2103  
 2104  
 2105  
 2106  
 2107  
 2108  
 2109  
 2110  
 2111  
 2112  
 2113  
 2114  
 2115  
 2116  
 2117  
 2118  
 2119  
 2120  
 2121  
 2122  
 2123  
 2124  
 2125  
 2126  
 2127  
 2128  
 2129  
 2130  
 2131  
 2132  
 2133  
 2134  
 2135  
 2136  
 2137  
 2138  
 2139  
 2140  
 2141  
 2142  
 2143  
 2144  
 2145  
 2146  
 2147  
 2148  
 2149  
 2150  
 2151  
 2152  
 2153  
 2154  
 2155  
 2156  
 2157  
 2158  
 2159  
 2160  
 2161  
 2162  
 2163  
 2164  
 2165  
 2166  
 2167  
 2168  
 2169  
 2170  
 2171  
 2172  
 2173  
 2174  
 2175  
 2176  
 2177  
 2178  
 2179  
 2180  
 2181  
 2182  
 2183  
 2184  
 2185  
 2186  
 2187  
 2188  
 2189  
 2190  
 2191  
 2192  
 2193  
 2194  
 2195  
 2196  
 2197  
 2198  
 2199  
 2200  
 2201  
 2202  
 2203  
 2204  
 2205  
 2206  
 2207  
 2208  
 2209  
 2210  
 2211  
 2212  
 2213  
 2214  
 2215  
 2216  
 2217  
 2218  
 2219  
 2220  
 2221  
 2222  
 2223  
 2224  
 2225  
 2226  
 2227  
 2228  
 2229  
 2230  
 2231  
 2232  
 2233  
 2234  
 2235  
 2236  
 2237  
 2238  
 2239  
 2240  
 2241  
 2242  
 2243  
 2244  
 2245  
 2246  
 2247  
 2248  
 2249  
 2250  
 2251  
 2252  
 2253  
 2254  
 2255  
 2256  
 2257  
 2258  
 2259  
 2260  
 2261  
 2262  
 2263  
 2264  
 2265  
 2266  
 2267  
 2268  
 2269  
 2270  
 2271  
 2272  
 2273  
 2274  
 2275  
 2276  
 2277  
 2278  
 2279  
 2280  
 2281  
 2282  
 2283  
 2284  
 2285  
 2286  
 2287  
 2288  
 2289  
 2290  
 2291  
 2292  
 2293  
 2294  
 2295  
 2296  
 2297  
 2298  
 2299  
 2300  
 2301  
 2302  
 2303  
 2304  
 2305  
 2306  
 2307  
 2308  
 2309  
 2310  
 2311  
 2312  
 2313  
 2314  
 2315  
 2316  
 2317  
 2318  
 2319  
 2320  
 2321  
 2322  
 2323  
 2324  
 2325  
 2326  
 2327  
 2328  
 2329  
 2330  
 2331  
 2332  
 2333  
 2334  
 2335  
 2336  
 2337  
 2338  
 2339  
 2340  
 2341  
 2342  
 2343  
 2344  
 2345  
 2346  
 2347  
 2348  
 2349  
 2350  
 2351  
 2352  
 2353  
 2354  
 2355  
 2356  
 2357  
 2358  
 2359  
 2360  
 2361  
 2362  
 2363  
 2364  
 2365  
 2366  
 2367  
 2368  
 2369  
 2370  
 2371  
 2372  
 2373  
 2374  
 2375  
 2376  
 2377  
 2378  
 2379  
 2380  
 2381  
 2382  
 2383  
 2384  
 2385  
 2386  
 2387  
 2388  
 2389  
 2390  
 2391  
 2392  
 2393  
 2394  
 2395  
 2396  
 2397  
 2398  
 2399  
 2400  
 2401  
 2402  
 2403  
 2404  
 2405  
 2406  
 2407  
 2408  
 2409  
 2410  
 2411  
 2412  
 2413  
 2414  
 2415  
 2416  
 2417  
 2418  
 2419  
 2420  
 2421  
 2422  
 2423  
 2424  
 2425  
 2426  
 2427  
 2428  
 2429  
 2430  
 2431  
 2432  
 2433  
 2434  
 2435  
 2436  
 2437  
 2438  
 2439  
 2440  
 2441  
 2442  
 2443  
 2444  
 2445  
 2446  
 2447  
 2448

### Understanding the FLOOR PLANS

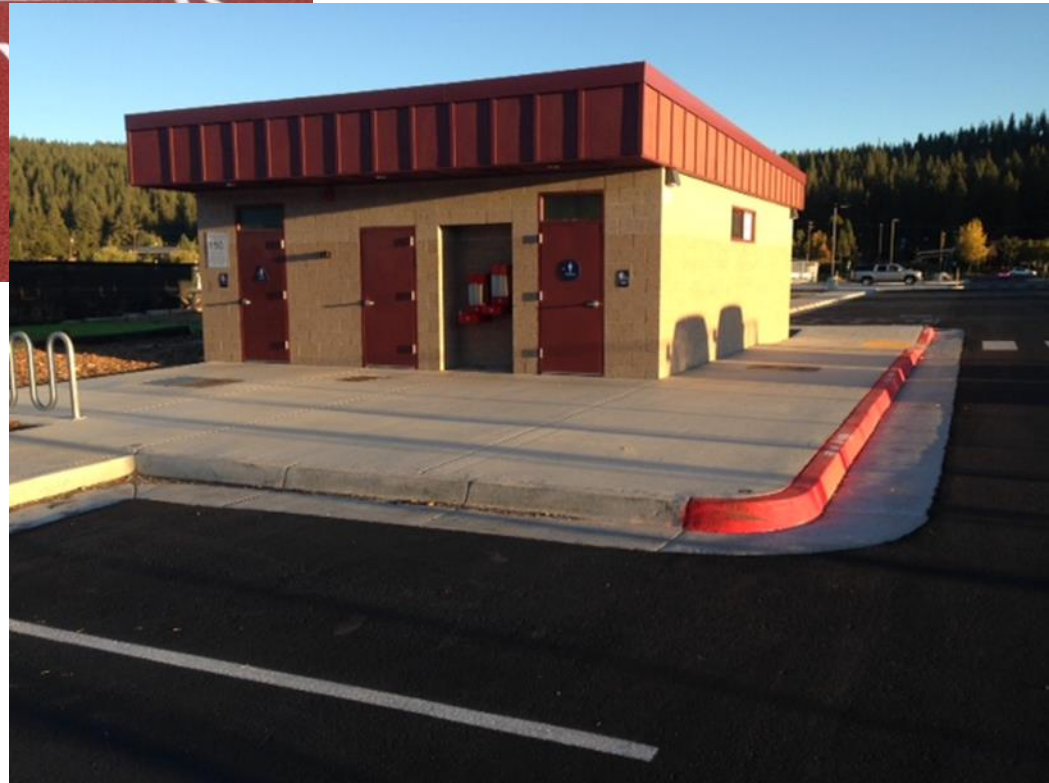
### A2.1.2

## Maintenance/Operations Building





## Truckee High School – Phase I





# Truckee High School: Phase II New Construction/ Modernization

## Scope of Work

**Phase II:** Start Construction Spring 2017  
Complete Construction Fall 2019

- Modernize existing buildings
- Upgrade classroom roofs for snow load
- Front facade enhancement
- Upgrade building systems
- Remove modular buildings and add classrooms
- New science labs
- New elective spaces
- New science technology and math labs
- Modernize theater and reconfigure performing arts
- Enhance girls locker room
- New library
- Upgrade fire alarm
- Student quad
- Flexible furniture
- Classroom technology package
- Parking lot expansion and bus drop off

**Project Architect:** DLR Group

**TTUSD Project Manager:** Rob Koster

**Contractor:** TBD

**Site Budget:** \$ 52,708,160



## Truckee High School - Pool Building

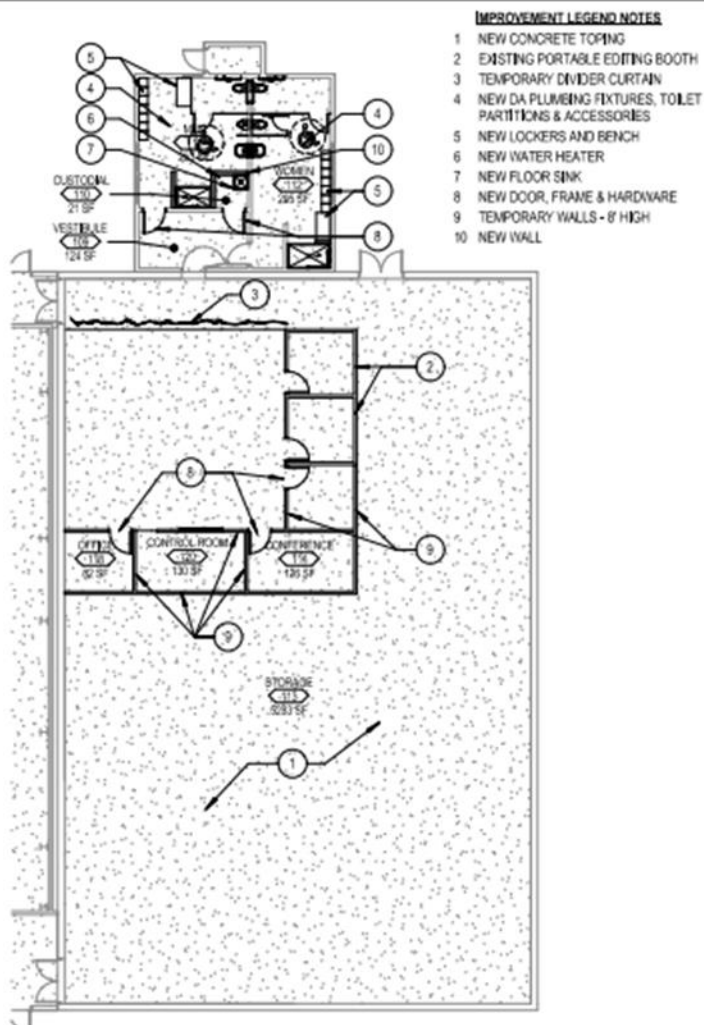


### Pool Building:

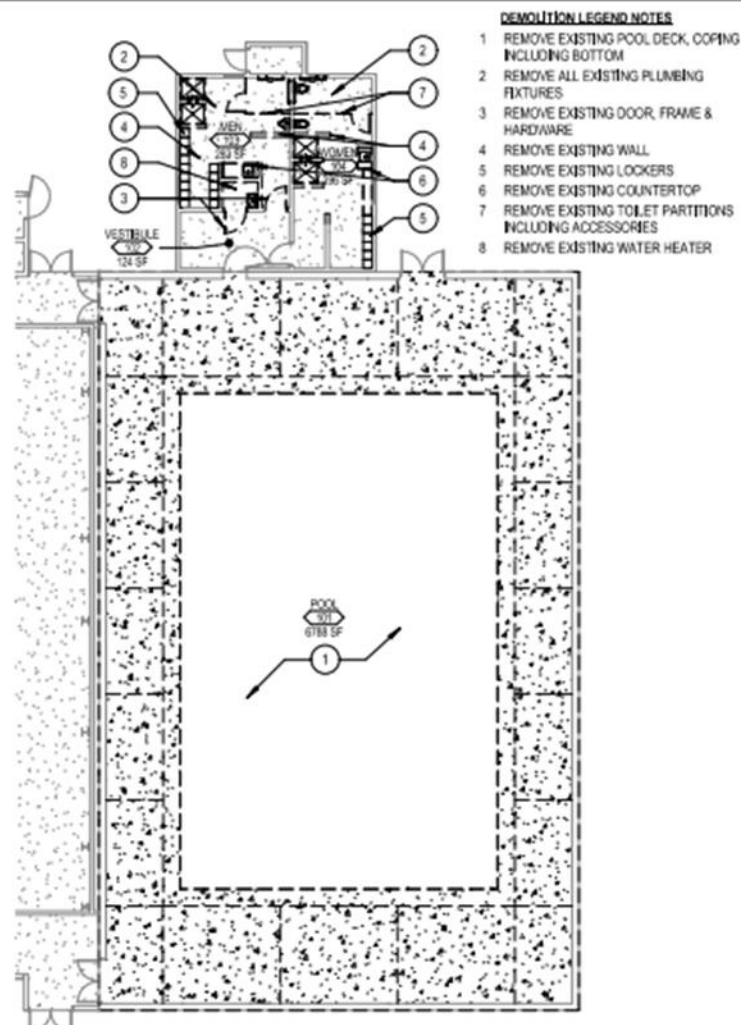
- Phase I: Completed April 1, 2017
- Phase II: Following the completion of the Truckee High School Project



# Truckee High School - Pool Building



2 IMPROVEMENT PLAN  
A1.1 SCALE: 1/16" = 1'-0"



1 DEMOLITION PLAN  
A1.1 SCALE: 1/16" = 1'-0"

PRELIMINARY  
DESIGN

DEMOLITION AND IMPROVEMENT PLAN  
POOL RENOVATION STUDY  
TRUCKEE, CA

A1.1

Project Number  
0010010

DLR Group  
Architects, Engineers, Planners, Interior Designers  
© 2010 DLR Group, Inc. All Rights Reserved



# Truckee High School



# Truckee High School

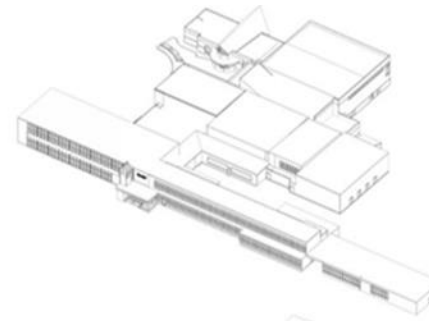
NEW CLASSROOM WING - NORTHWEST



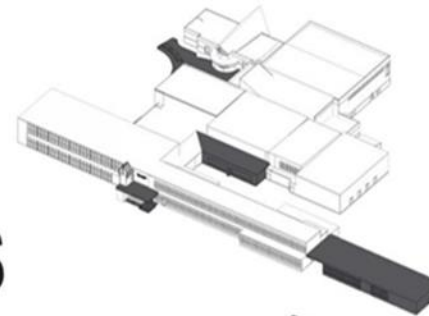
TRUCKEE HIGH SCHOOL

SCOPE OF WORK

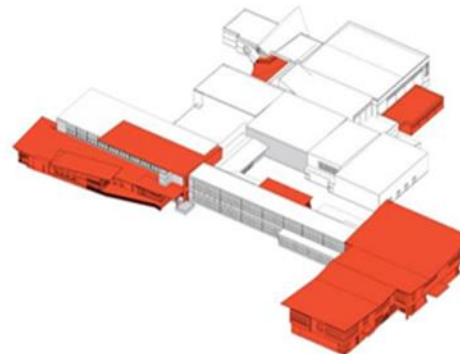
**EXISTING HIGH  
SCHOOL BUILDING  
VS.  
ADDITIONS &  
RENOVATIONS**



**EXISTING**



**DEMOLITION**



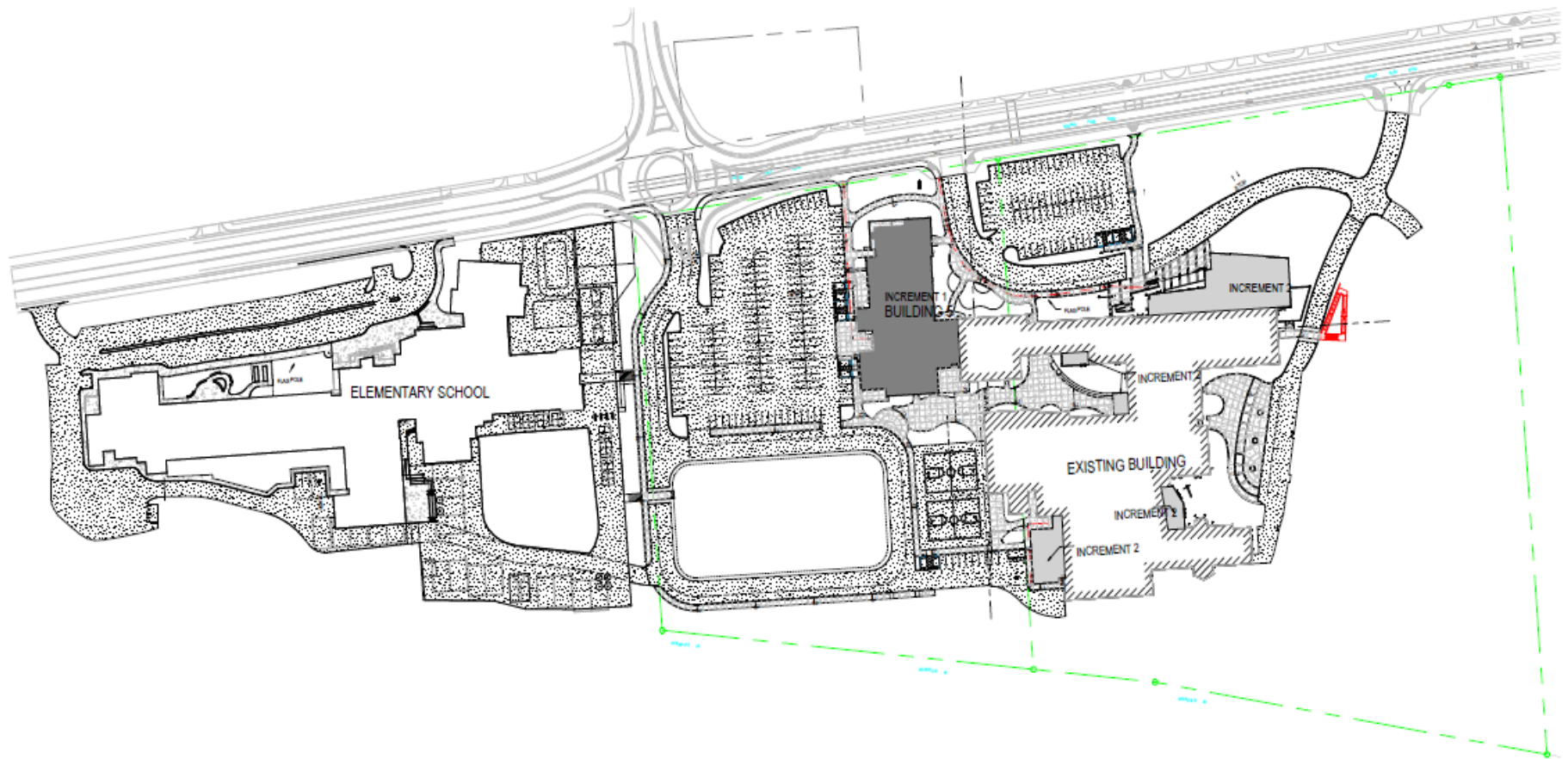
**ADDITION &  
RENOVATION**



# Truckee High School

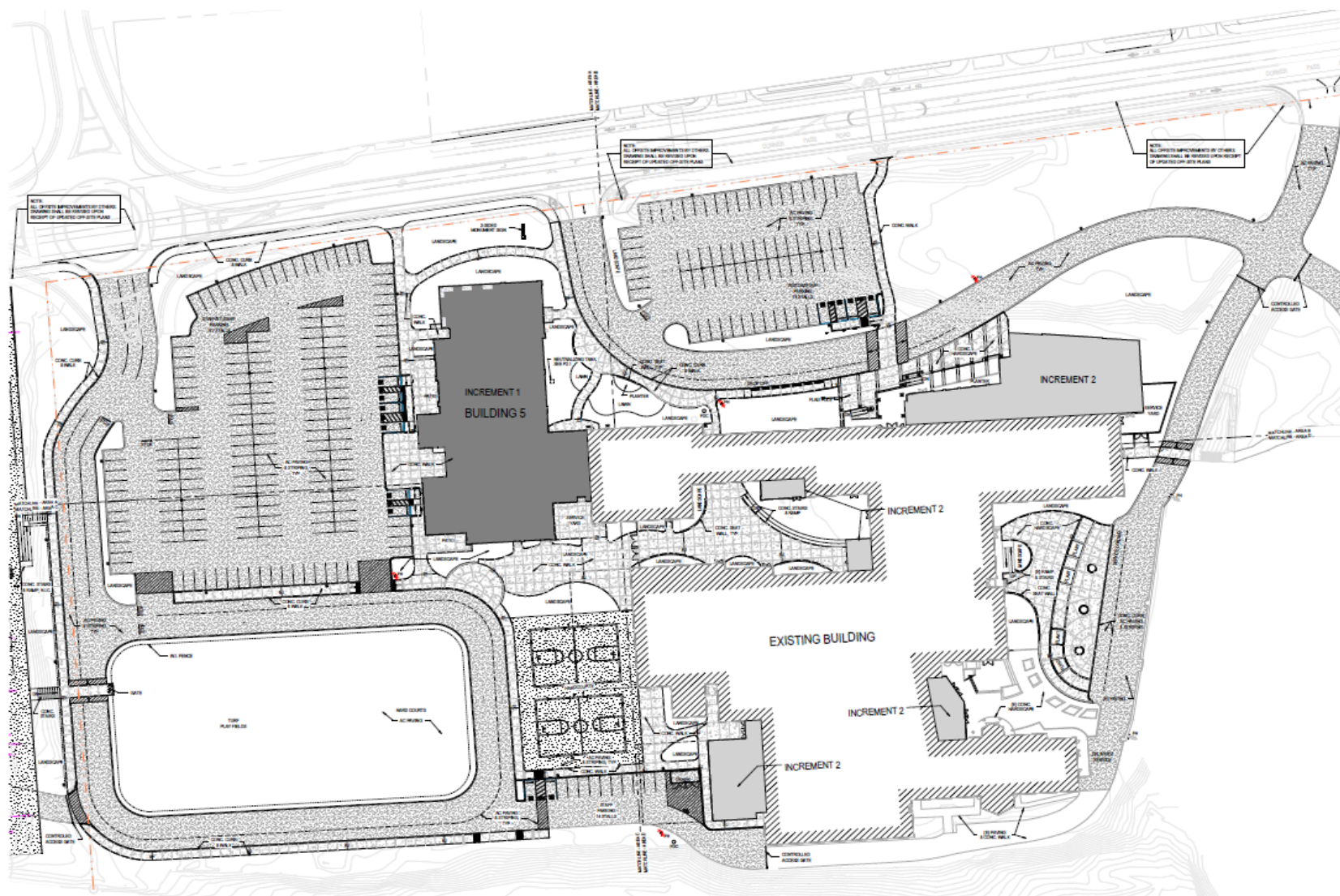


# Truckee High School/Truckee Elementary





# Truckee High School





**Truckee Elementary School**



# Truckee Elementary School



## Project Schedule

- Submitted to DSA in March 2017
- Bid Project November 2017
- Start Construction in June 2018
- Construction Completed by Fall 2019

**Project Architect: DLR Group**

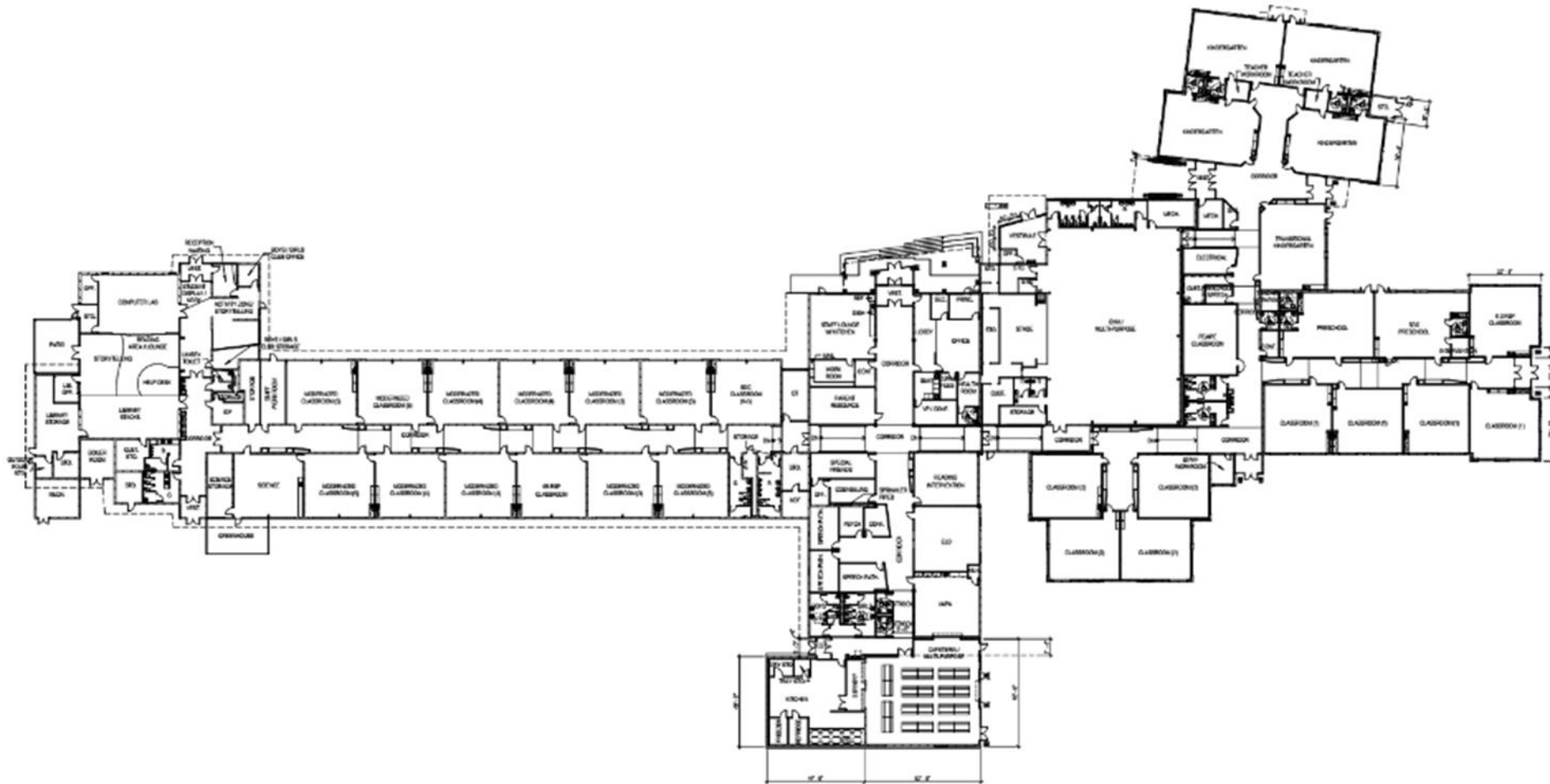
**TTUSD Project Manager: Anna Klovstad**

**Contractor: Sundt Construction**

**Site Budget: \$33,544,825**

TRUCKEE ELEMENTARY SCHOOL

# Truckee Elementary School





# Truckee Elementary School



TRUCKEE ELEMENTARY SCHOOL

# Truckee Elementary School

KINDERGARTEN & PRESCHOOL PLAYGROUND



TRUCKEE ELEMENTARY SCHOOL

